



MASTER LEDtube EM/ Mains

MASTER LEDtube 1200mm HO 14W865 T8

The Philips MASTER LEDtube integrates a LED light source into a traditional fluorescent form factor. Its unique design creates a perfectly uniform visual appearance which cannot be distinguished from traditional fluorescent. For those that are looking for value for money within limited budget and re-lamping efforts for better light effect and lifetime.

Product data

General Information	
Cap base	G13 [Medium Bi-Pin Fluorescent]
RoHS mark	RoHS mark
Nominal lifetime (nom.)	50000 h
Switching cycle	200000X
B50L70	50000 h
Light Technical	
Colour code	865 [CCT of 6,500 K]
Luminous flux (nom.)	2100 lm
Luminous flux (rated) (nom.)	2100 lm
Correlated colour temperature (nom.)	6500 K
Colour consistency	<6
Color rendering index (nom.)	83
LLMF at end of nominal lifetime (nom.)	70 %
Operating and Electrical	
Input frequency	50 to 60 Hz
Power (Rated) (Nom)	14 W
Lamp current (max.)	65 mA

Lamp current (min.)	60 mA
Starting time (nom.)	0.5 s
Warm-up time to 60% light (nom.)	0.5 s
Power factor (nom.)	0.9
Voltage (Nom)	220-240 V
Temperature	
T ambient (max.)	45 °C
T ambient (min.)	-20 °C
T storage (max.)	65 °C
T storage (min.)	-40 °C
T-Case maximum (nom.)	55 °C
Controls and Dimming	
Dimmable	No
Mechanical and Housing	
Product length	1200 mm

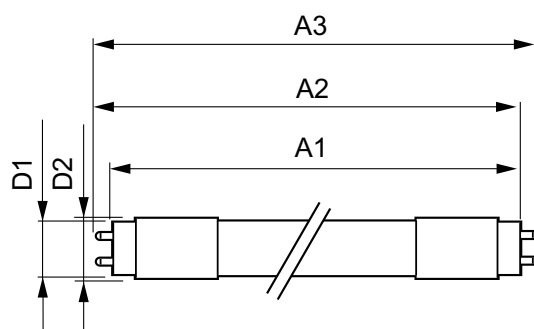
MASTER LEDtube EM/Mains

Approval and Application	
Energy efficiency label (EEL)	A++
Energy-saving product	Yes
Approval marks	CE marking RoHS compliance KEMA Keur certificate
Energy Consumption kWh/1000 h	14 kWh
Product Data	
Full product code	871869668728400

Order product name	MASTER LEDtube 1200mm HO 14W865 T8
EAN/UPC – product	8718696687284
Order code	68728400
Numerator – quantity per pack	1
Numerator – packs per outer box	10
Material no. (12NC)	929001299408
Net weight (piece)	0.215 kg

Warnings and Safety

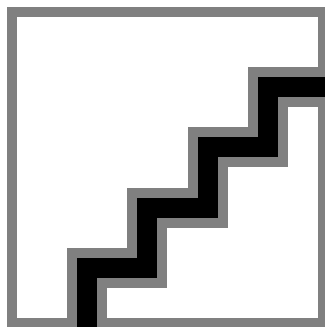
Dimensional drawing



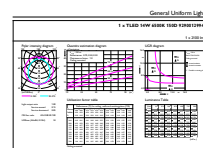
TLED 4ft 14W-36W 2100lm 150D 6500K G13ND

Product	D1	D2	A1	A2	A3
MASTER LEDtube 1200mm	25.8 mm	28 mm	1198.2 mm	1205.3 mm	1212.4 mm
HO 14W865 T8					

Photometric data



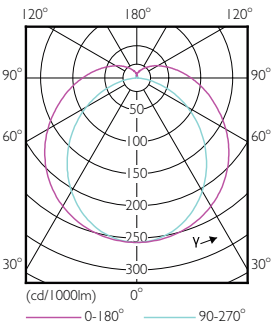
LEDtube 1500mm 20W G5 865 3000lm



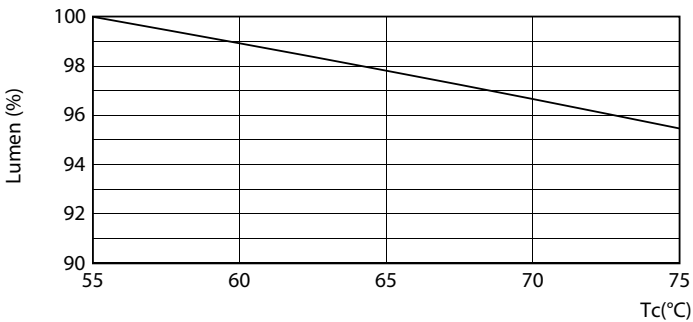
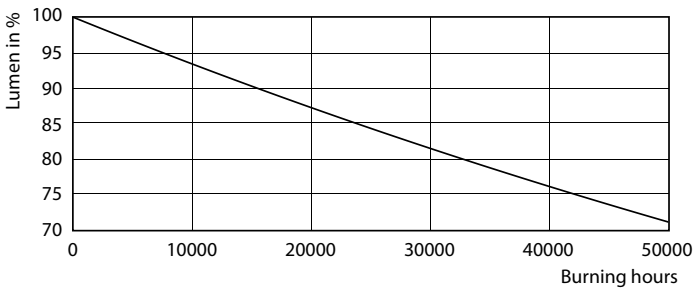
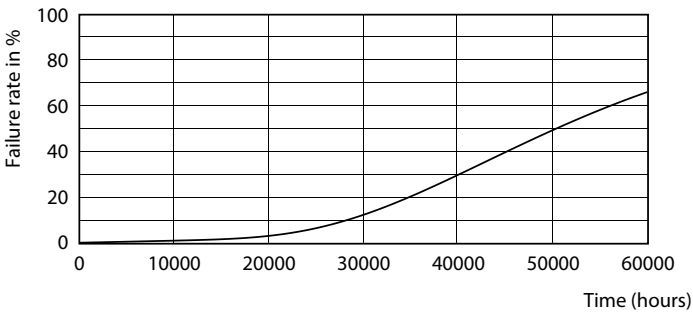
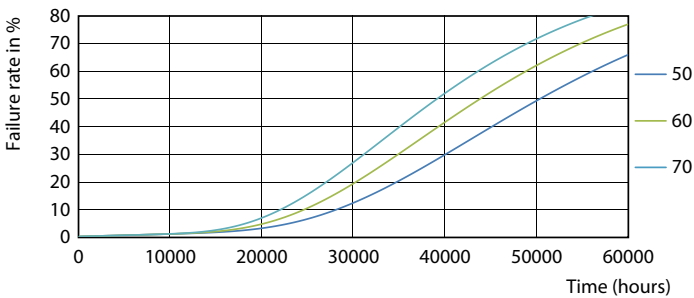
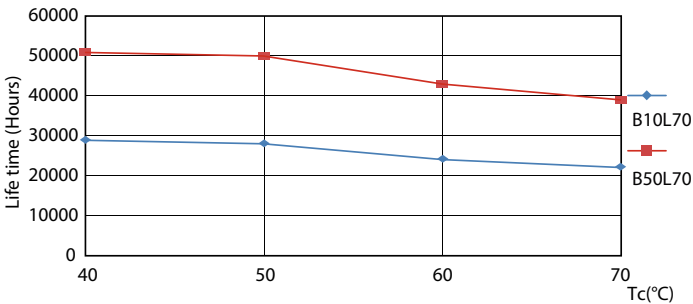
Calicut Phosphorus 43	Polys Light 8.5	Page 3
-----------------------	-----------------	--------

MAS LEDtube HO 14W G13 865 T8

Photometric data



Lifetime



MASTER LEDtube EM/Mains

